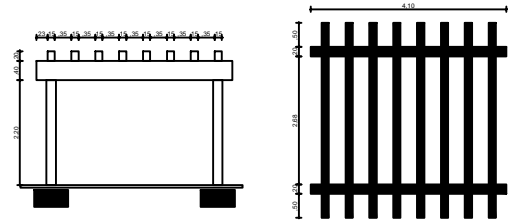
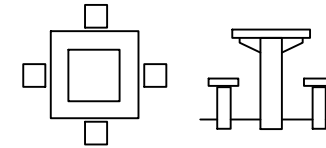


Ferro sapata  
4 Ferros de  $\varnothing$  10 mm  
Estribos Sapata  
 $\varnothing$  5 mm  
Espessamento 15 cm

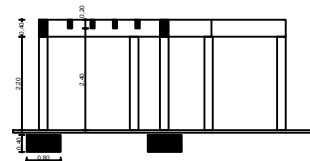
DETALHE DA FUNDAÇÃO DO PERGOLADO  
sem escala



DETALHE PERGOLADO DE CONCRETO  
sem escala

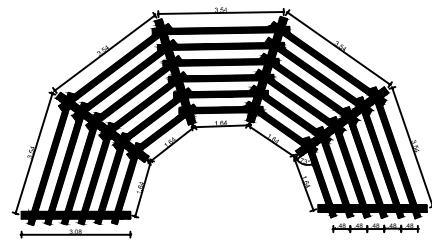
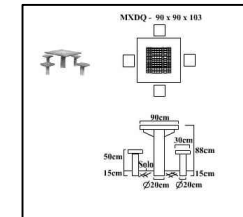


DETALHE CONJ. MESA DE XADREZ E DAMAS  
sem escala

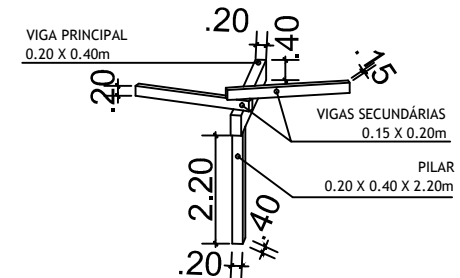
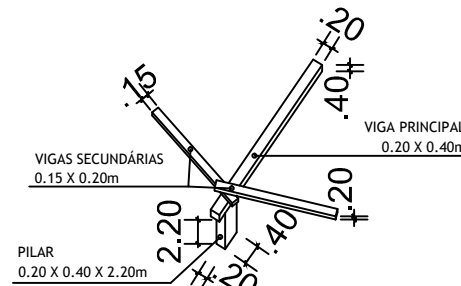


Ferro sapata  
4 Ferros de  $\varnothing$  10 mm  
Estribos Sapata  
 $\varnothing$  5 mm  
Espessura 15 cm

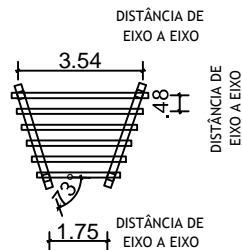
DETALHE PERGOLADO DE CONCRETO  
sem escala



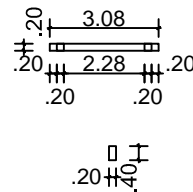
PERGOLADO DE CONCRETO EM FORMA DE PÉTALA  
ESCALA: 1/75



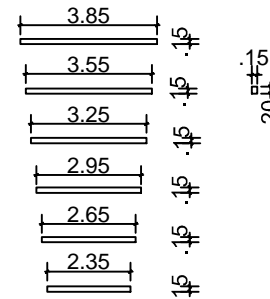
PERSPECTIVAS  
SEM ESCALA



PÉTALA DO PERGOLADO  
ESCALA: 1/75



VIGA PRINCIPAL  
ESCALA: 1/75



VIGAS SECUNDÁRIAS  
ESCALA: 1/75

 <p>Prefeitura Municipal de Pedro Osório/RS Secretaria Municipal de Coordenação e Planejamento</p> <p>Praca dos Ferrovianos s/n Centro, Pedro Osório/RS - CEP 96300-000 Fone: 53 3256-1299 - Fax: 53 3295-1408 E-mail: planejamento@pedrosoorio.rs.gov.br</p>		PROJETO:	REVITALIZAÇÃO PÇA ANTÔNIO SATTRE ALAM	REF.:			
		LOCAL:	BAIRRO CENTRO - PEDRO OSÓRIO				
		TIPO DE PROJETO:	URBANÍSTICO				
		CARACTERÍSTICAS:	DETALHES - PERGOLADO E MESAS				
		SECRETARIA:	ARQ. MIRIAM R. GONÇALVES - CAU RS A56282-3				
		RESPONSÁVEL TÉCNICO:	ARQ. MILTON MARCOLIN - CAU RS A21132-0				
		EQUIPE DE PROJETO:	ARQ. ANDERSON P. AIRES - CAU RS A101162-6				
AREA:	86,80m <sup>2</sup>	ESCALA:	1/250	DATA:	10/2015	DES.:	Anderson P. Aires

04